

TOOLS FOR ARCHITECTS

i n n o^{.fi}

Inno started manufacturing personal looking and timeless products that stand out of the mass in 1975. Today Inno is known of it's internationally awarded collection. Inno develops innovative products of high quality to meet the most demanding requirements of public interiors.

"We strongly believe that a good product has to give more than a look and a function, it has to feel right".

Tools for architects is a teaser to give a taste of our collection



Harri Korhonen,
Interior architect



Mikko Laakkonen,
Designer



Jouni Leino,
Interior architect



Julie Tolvanen,
Designer



Juha Rista,
Designer



Ari Kanerva,
Designer



Susanne Grønlund,
Designer



Vertti Kivi,
Designer



Jouko Järvisalo,
Interior architect



Steinar Hindenes,
Designer



Simo Heikkilä,
Interior architect

DESIGNERS



TABLE: BONDO WOOD

Lab XL is a unique and perfect lounge chair for meeting areas, lobby areas, hotels and people who appreciates high quality in home environment. The generous and comfortable chair is available in two heights. Lab XL chair has been granted the internationally recognized GOOD DESIGN™ 2017 Award

The Lab family is designed as a part of the cozy office concept that was developed by Inno six years ago. The aim of this concept is to bring out the soft values from the traditional homes to public spaces. Earlier models of the Lab family was granted GOOD DESIGN™ award in 2015.

Design: Harri Korhonen



LAB XL HIGH



LAB XL LOW

LAB XL



Lab XL Rocking is a member of the Lab family. A modern king size rocking chair which is very inviting and cozy.

Design: Harri Korhonen





LAB XL

TABLE: BONDO WOOD



LAB XL STOOL

Lab XL bench and Lab XL stool, both have the same cozy pillow shape that can be found in all Lab XL products.

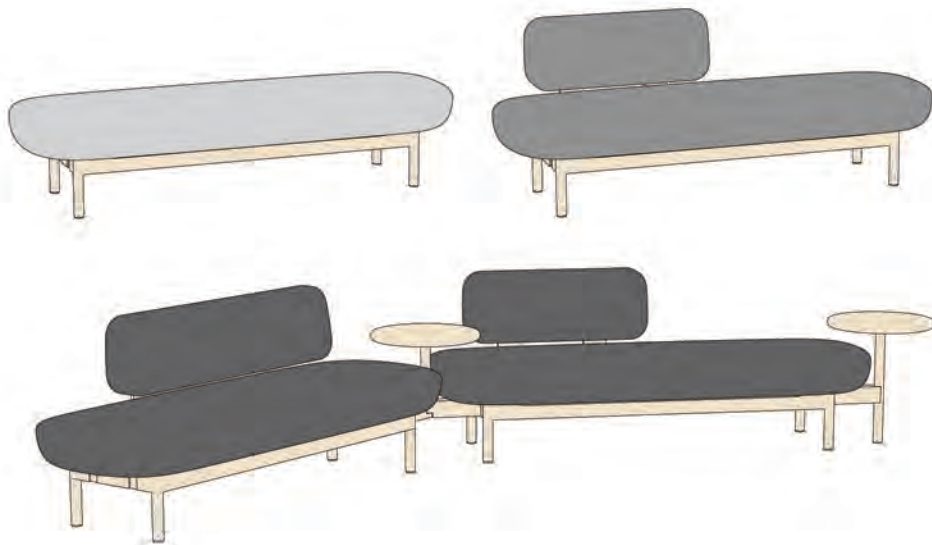
Design: Harri Korhonen



LAB XL BENCH



LAB XL



Linko is a modular seating system. This sofa is versatile combination of a bench and sofa with a warm and soft feeling. It brings out the best sides of a sofa and bench. Which are the sofas cozynes and the versatile usability of a bench.

The modularity of Linko comes out with different kinds of tables and backrests. It is ideal for lounge areas, offices and other public spaces.

Design: Mikko Laakkonen

LINKO



TABLE: BONDO WOOD



TABLE: BONDO LAPTOP

P

Play is modular sofa which can be assembled from different seat, backrest and armrest pieces. Soft pillows makes this product even more welcoming and cozy.

The possibility to create prestigious and also playful combinations for meeting areas, lobby areas, hotels and other public spaces.

Design: Vertti Kivi



PLAY

TABLE: BONDO

A1 SEAT

A2 SEAT

A3 SEAT

A4 SEAT

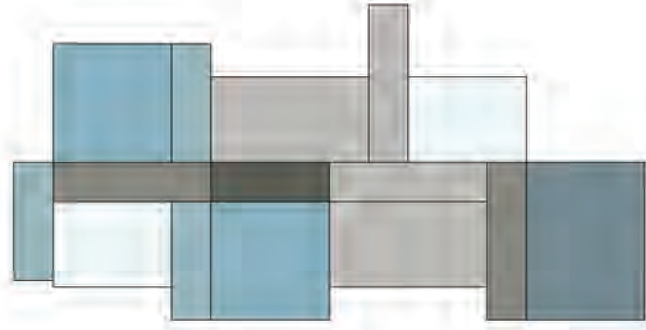
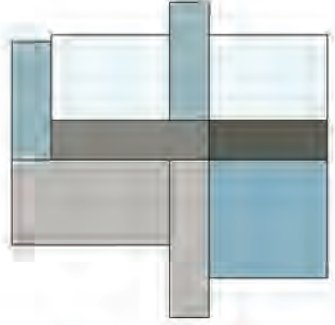
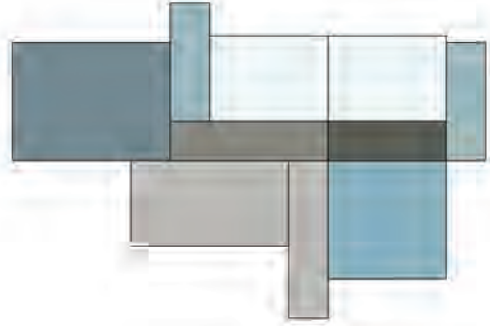
B1 ARMREST

B2 ARMREST

C1 BACKREST

C2 BACKREST





STANDARD VARIATIONS **PLAY**



T

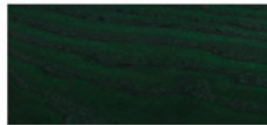
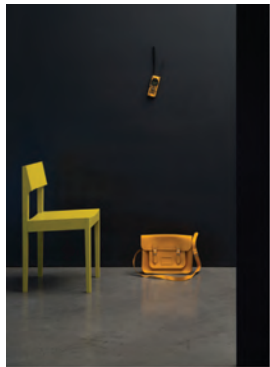
The inspiration for the Tilt chair originates from the car modeling world of the 50's. The compatibility of the streamlined shapes and the variety of the arches creates a seamless whole. The seat of the Tilt chair comprises of two parts. Specially facet in the armrests and the structure which goes around the chair makes this product unique.

Design: Juha Rista





TABLE: LAB



CHAIR: INTRO C

S

Selected Colours cover a vast majority of the collection for monochrome outfit. RAL1012 Yellow, RAL3002 Red, RAL5001 Blue and RAL6012 Green are available stained and matte lacquered on ash wood (veneered surfaces and massive wood) and matte finished on metal. The colour collection consists of product families Aura, Basso, Bondo, In-tensive, Intro, Kola, Lab and Ono with some exemptions of models.

More information about standard materials in separate brochures and www.inno.fi



CHAIR: BASSO SB Y

TABLE: LAB L

CHAIR: BASSO SA Y



Ono is a light wooden chair with welcoming design language rooting strongly to the Scandinavian design tradition giving the chair a touch of history. The construction is obvious in its own way, the back carries and lifts the seat from the frame giving the chair a light and inviting expression.

Design: Susanne Grønlund





Julie is the result of a persistent design process where curved veneer slats form a beautiful back and armrests for this light looking, sculptural wooden small chair for dining and meeting purposes. Available with or without seat upholstery and an optional back pillow. Julie has been granted the internationally recognized GOOD DESIGN™ 2015 Award.

Design: Julie Tolvanen, 2014







JULIE



F

Flip is a wooden folding table for lecture, meeting and restaurant surroundings. It has a classic, warm look with a modern twist.

Design: Harri Korhonen



FLIP

CHAIR: INTRO



VERTICAL STACKING



LAB WOOD



LAB MEETING



GOOD
DESIGN

LAB

Lab table system include several size categories and cable management options. High Lab tables are presented along with high chairs for productive stand-up meetings. The members of the Lab seating family include the vertically stacking Lab Wand Lab Wood, Lab Meeting, Lab XL, Lab Bar chair in two heights, Lab X with a 4-star base with an optional swivel and Lab Z chair with a 5-star base and height adjustment. Z & X are available with or without a wooden or metal armrest. The softness of the chair has been created through a plain quilted seat. Lab product family has been granted the internationally recognized GOOD DESIGN™ 2015 Award

Design: Harri Korhonen





LAB

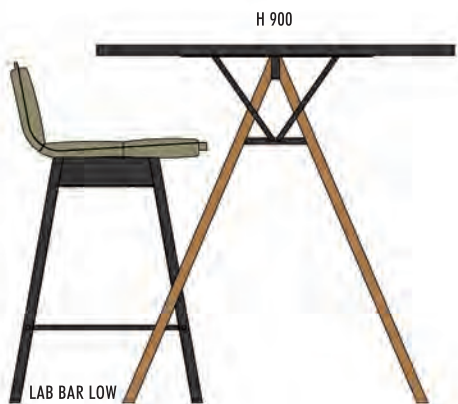




Lab table is a casual meeting or dining table, available as an individual or a modular version that can be extended endlessly.

Design: Harri Korhonen





Lab Bar is continuation to the cozy convention of the Lab table and chair series. The softness of the chair has been created through a plain quilted seat. Lab Bar is available in two heights, accompanied with a high Lab table.

Design: Harri Korhonen



LAB BAR HIGH



LAB BAR LOW



LAB



TABLE: BONDO



Taivu is a light and youthful, totally upholstered lounge chair for lobbies and waiting areas. It is a generous and comfortable chair seasoned with classic shapes. Taivu is easily tailored to fit different public interiors as well as homes.

Design: Mikko Laakkonen





reddot design award
best of the best 2013



AURA

A

Aura is a harmonious and cozy 2-seater sofa, it surrounds you and is perfect for creating peaceful interiors. Due to its high back the tempting and sympathetic Aura also works as a divider. The disclosed structure gives Aura a characteristic identity.

Design: Mikko Laakkonen







A

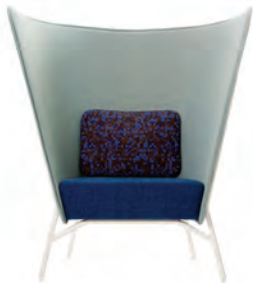
Aura sofa is accompanied with a sympathetic lounge chair. Mix the sofa and the chair together to form harmonious and cozy Aura groups or use the chair separately to form lower sitting groups. Also to be used as a side chair. The back of the Aura chair is slightly lower allowing more visibility.

Design: Mikko Laakkonen





AURA SOFA



AURA CHAIR L



AURA CHAIR



AURA SOFA LOW

AURA

A

Aura family with metal legs consists of a chair and a sofa, both available with a high or a low back. Mix the members of the award-winning Aura family together to create dynamic groups.

Design: Mikko Laakkonen

TABLE: BONDO

AURA



TABLE: BONDO WOOD

AURA WOOD SOFA



AURA WOOD CHAIR

A

Aura Wood is a natural extension to the Aura family. With its wooden frame and standard height Aura will be entering the use range of regular sofas yet preserving the characteristics of the award-winning Aura series. Aura product family has been granted the internationally recognized GOOD DESIGN™ 2015 Award

Design: Mikko Laakkonen





750x650x390

650x550x330



550x450x620



450x350x620



1400x650x390

1200x550x330

B Bondo table was originally designed as part of the Bondo sofa series. The light structure, beveled table top edge and soft shape create an aerial impression. The tables overlap each other slightly which allows for organic layouts. The table is available in five sizes including a small side table to be used as a laptop or writing table in groups that consists of sofas and armchairs.

Design: Harri Korhonen.



BONDO



B

Bondo sofa tables are also available with a wooden leg option.

Design: Harri Korhonen.



BONDO

Intro is a stackable wooden chair for use in a variety of public and private spaces. At first sight Intro looks simple but it is designed with a lot of attention to detail. The unique design combined with ergonomic proportions make it suitable for use in different purposes alone, in a group or around a table. The armrest version of Intro contains a distinct spirit that is suitable also for conference milieus. Non-stackable version C. Available with an upholstered seat and/or back. Optional row connection.

Design: Ari Kanerva

TABLE: LAB



INTRO C1



INTRO A1



INTRO B1





C.D. Medium B2



C.D. Medium is a stackable wooden chair with good ergonomic features and a classic look.

Design: Harri Korhonen




C.D. Medium A3





C.D. MEDIUM

A long, white, modular conference table is the central focus, stretching from the foreground into the distance. The table has a central wooden strip and a cable tray. It is surrounded by light-colored, modern chairs. The room features wood-paneled walls, a large black screen on the left, and large windows on the right with decorative perforated glass. The ceiling has recessed lighting.

In-tensive is a forerunner of modular electrified meeting tables. First introduced back in 1998 in Nokia Research Center In-tensive has proven useful in meeting rooms all over the world. The modular structure, table tops in different shapes, sizes and materials and a large variety of leg versions make In-tensive suit both modern and classical interiors. All In-tensive tables have a spacious cable tray for easy cable management and different connections. For total range see separate brochure.

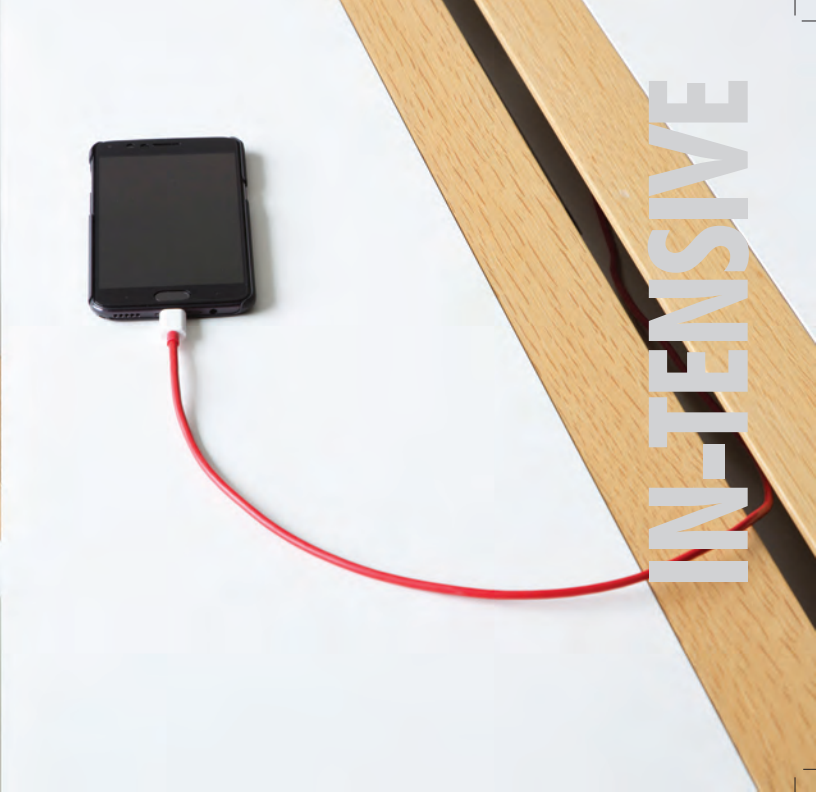
Design: Jouni Leino



IN-TENSIVE



CHAIR: INTRO



IN-TENSIVE



CHAIR: SELECT



CHAIR: KOLA

IN-TENSIVE





IN-TENSIVE

CHAIR: SELECT





BASSO

TABLE: IN-TENSIVE (FRAME LEG)



BASSO S



BASSO MA X



BASSO LB X



BASSO XLB ZXL

BASSO

Basso is a streamlined chair with remarkable sitting comfort. Basso creates discreet reliability and even playful ambiance particularly in meeting rooms. It has a lumbar support embedded in the streamlined profile. Basso Y has been granted the internationally recognized GOOD DESIGN™ 2016 Award.

Design: Harri Korhonen

TABLE: CUSTOM MADE



BASSO M xb



BASSO S writing tablet & row connection



BASSO S MEETING



BASSO

TABLE: IN-TENSIVE (SPECIAL VERSION)





Jarman family consists of lounge chair, 2- and 3-seater sofa and a sofa table. The designer's fundamental idea was to design a rectangular, square and cubic sofa with a softer look in appearance and detail. Due to its plain and logical design and different upholstery possibilities Jarman fits both into modern public interiors and private homes.

Design: Steinar Hindenes



JARMAN



Box Wood with wooden legs and soft appearance is a new version of the modular Box sofa system. The sofas and the benches that come in different widths and lengths are presented as part of the Cozy Office concept.

Design: Harri Korhonen





BOXWOOD





2-SEATER BENCH + EXTENSIONS



2-SEATER BENCH



1-SEATER BENCH



BOXWOOD

O

Oscar is a design classic and one of Inno's best sellers. The popularity is based on its sympathetic character. The spring effect in the backrest and a soft seat creates a good sitting comfort.

Design: Harri Korhonen



OSCAR A1



OSCAR PUFF



OSCAR A2

OSCAR

K

Kola is aesthetically and weight wise a light family of chairs making it fit both public and private modern interiors. The seat, manufactured of 100% recyclable polyester felt, is part of the supporting construction. It has also great acoustic absorption capacities. The upholstered cushion gives extra comfort and allows the use of playful colours. The Kola chairs are fire resistant and easy to clean.

The Kola family includes an easy chair, a swiveling easy chair, a rocking chair, a meeting or dining chair with different leg options and a stacking small chair with or without armrests, or with a crossleg for meeting applications along with a bar chair.

Kola has been awarded with red dot award: product design 2012, Fennia Prize 2012 and Good Design Award 2010.

Design: Mikko Laakkonen



KOLA LOUNGE



KOLA LIGHT



KOLA ROCKING CHAIR + CUSHION



KOLA

KOLA ROCKING CHAIR



SOFA: AURA



KOLA STACK RA + CUSHION



KOLA BAR



KOLA



TABLE: IN-TENSIVE

KOLA



KOLA LOUNGE X



KOLA ZA



GOOD DESIGN AWARD The Chicago Athenaeum 2010
RED DOT DESIGN AWARD WINNER 2012
FENNIA PRIZE 2012





KOLA STACK B, PERFORATED



KOLA STACK A



ROW CONNECTION

KOLA



KOLA LIGHT WOOD



KOLA ROCKING CHAIR + CUSHION



KOLA



S

Select is a balanced and comprehensive design furniture collection for hotels, lounges, conference rooms to auditoriums, dining rooms, cafeterias, classrooms etc. The distinct form and numerous material and leg options offer complete freedom to create different furnishings for interiors. The shape of Select gives a hint of comfort and Select fulfills that commitment. For a creative mind Select works as a perfect tool. That's why we've kept the shape simple and the versions versatile. Select yours.

Design: Harri Korhonen 2001-



SELECT



SELECT





S

Selectum is a highly versatile auditorium chair with many upholstery and finishing options. Its slightly curved shell gives perfect comfort even for longer sitting. The basic form is practical - the generous Selectum looks natural and aesthetic in rows. A single fixed chair can easily be grouped to curved or straight rows to form different set-ups with variable distance between chairs etc. Optional armrests and a folding writing tablet.

Design Harri Korhonen



SELECTUM





S

Sessio is an auditorium chair and beam seating solution with a mesh backrest. Optional armrest / writing tablet.

Design Harri Korhonen



SESSIO





S

Simo auditorium chair gives a pleasant feeling to any interior with its elegant forms and ergonomic seating comfort. Several possibilities for writing tablets: fixed, or foldable either from the backrest or armrest.

Design: Simo Heikkilä



SIMO



M

Mio auditorium chair with wooden backrest and seat creates a continuous wave, giving a special character to interiors. The frame can be fixed to declining floors in different ways and offers several solutions for fixing writing tablets to the leg structure, backrest or armrest. Its rich detail makes Mio an outstanding choice.

Design Jouko Järvisalo





MIO

More information in separate brochures, catalogues and on our webpage www.inno.fi

inno^{.fi}

ARCHI
TONIC

